



Notice to Competitors

SSORC 2020-11-29-1

Amendment to Sailing Instruction Appendix B for Sunday 29 November

Appendix B of the SSORC Sailing Instructions has been amended for Sunday 29 November as follows...

APPENDIX B (amended 29 November 2020)

Inshore Passage Race on Sunday 29 November

B1 RACING AREA

B1.1 The racing area will be Sydney Harbour and North Harbour.

B2.0 DESCRIPTION OF COURSES

B2.1 The course to be sailed for each class will be signalled by a Numeral Board displayed from the Committee Vessel at or prior to the Warning Signal. The course to be sailed may also be broadcast on VHF Channel 72.

B2.2 All Australian Sailing (AS) Fixed Marks shall be rounded to STARBOARD. Laid Marks shall be rounded to PORT or to STARBOARD as designated (S) or (P).

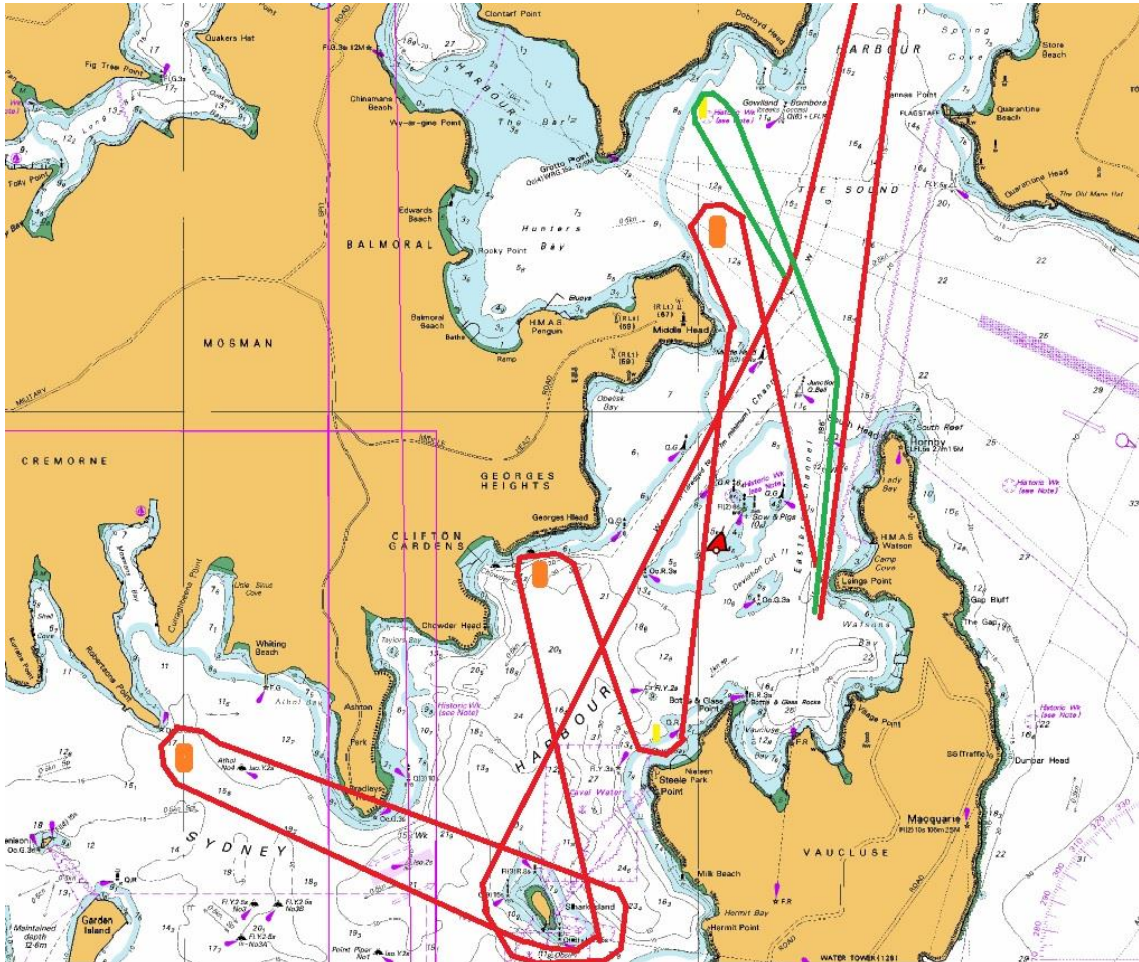
B3 DESCRIPTION OF MARKS

MARK	DESCRIPTION
Start / Finish Mark	Yellow inflatable buoy
CBLM (Laid Mark)	Orange inflatable buoy South-East of Chowder Bay Fuel Wharf
MHLM (Laid Mark)	Orange inflatable buoy North-East of Middle Head
RPLM (Laid Mark)	Orange inflatable buoy South of Robertson's Point (Cremorne)
GP	AS Mark Grotto Point - Approx. Lat. 33-48-987 Lon. 151-16-133
ME	AS Mark Manly East - Approx. Lat. 33-48-196 Lon. 151-16-726
MW	AS Mark Manly West - Approx. Lat. 33-48-176 Lon. 151-16-625
NP	AS Mark Nielsen Park - Approx. Lat. 33-51.029 Lon. 151-15.874
SI	AS Mark Shark Island - Approx. Lat. 33-51-626 Lon. 151-15-541 (Note the area between the Shark Island AS Mark and Shark Island is a continuing obstruction and no boat shall pass between them)

B4 COURSES

SPECIAL COURSE 1 Division 1 & TP52 (16.8 nm)	Start (Watson's Bay) – MHLM (P) – NP – CBLM (P) – SI – RPLM (S) – SI – MW – ME – Finish (Watson's Bay)
SPECIAL COURSE 2 Division 2 & Sydney 38 (14.6 nm)	Start (Watson's Bay) – MHLM (P) – NP – CBLM (P) – SI – RPLM (S) – SI – GP – Finish (Watson's Bay)

B5 COURSE DIAGRAM - Special Harbour Courses for Sunday 29th November 2020



David Staley
MHYC Sailing Manager
28 November, 2020 at 1030hrs